



Nan Yang Gemological Institute

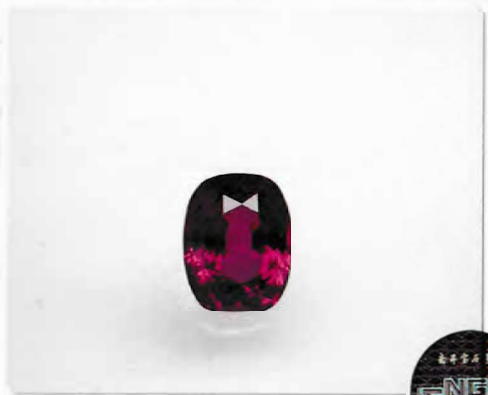
南洋宝石学院

Gemstone Report

宝石鉴定证书

Report No. 63824265

Date: September 1, 2015



Conclusion 鉴定结论

Natural Spinel

Weight 5.32 cts.
重量

Measurements 11.23 x 8.77 x 6.79 mm
尺寸

Shape and Cut Cushion, brilliant / step cut
形状和切工

Color Purple pink
颜色

Transparency Transparent
透明度

Diagnostic Properties

Refractive Index 1.716 (singly refractive)

折射率

Specific Gravity 3.59

相对密度

Absorption

Spectrum

吸收光谱

Magnification

放大检查

Other test

其它测试



Fingerprint, crystal, needle, fine particle and growth line

Fluorescence and UV-VIS spectrometer

Comments

备注

None.



C. G. Zeng B.Sc. (Hons), M.Sc. (Geology)
Consultant Gemologist, Jewellery Appraiser (USA)
FGA (England), C.D.G. (Belgium), D.G. (GIA)

14 Scotts Road, #03-80, Far East Plaza
Singapore 228213
Tel: (65) 6333 6238
www.ngi.com.sg